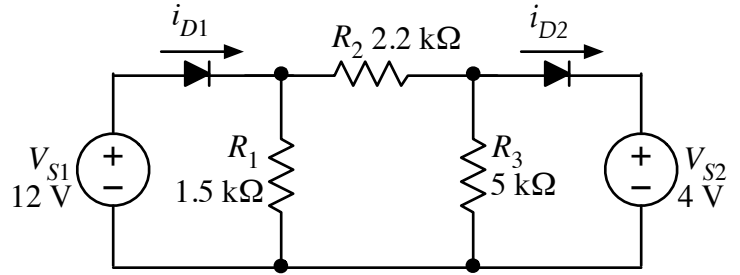


For the circuit shown at right, find the currents in the two diodes. Use the on/off model for the diodes. Be sure to check your assumptions after your initial calculation.



Then repeat the calculation with $V_{S2} = 12\text{ V}$.

$V_{S2} = 4\text{ V}$:

$i_{D1} =$ _____ $i_{D2} =$ _____

$V_{S2} = 12\text{ V}$:

$i_{D1} =$ _____ $i_{D2} =$ _____