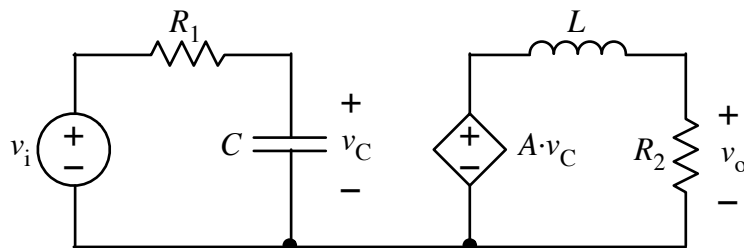


Calculate the transfer function for the circuit below. Express the answer as the ratio of two polynomials. Then find the expressions for the magnitude and phase of transfer function in the case were  $s = j\omega$ .



$$T(s) = V_o(s)/V_i(s) = \underline{\hspace{15cm}}$$

$$|T(j\omega)| = \underline{\hspace{15cm}}$$

$$\theta_T(j\omega) = \underline{\hspace{15cm}}$$