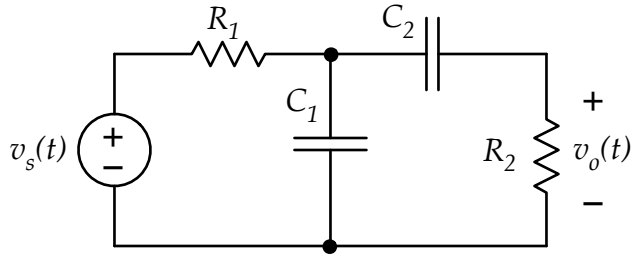


Calculate the transfer function for the circuit shown below. Express the result as a ratio of two polynomials. Then find the expressions for the magnitude and phase of transfer function in the case where  $s = j\omega$ .



$$T(s) = V_o(s)/V_s(s) = \underline{\hspace{15cm}}$$

$$|T(j\omega)| = \underline{\hspace{15cm}}$$

$$\theta_T(j\omega) = \underline{\hspace{15cm}}$$